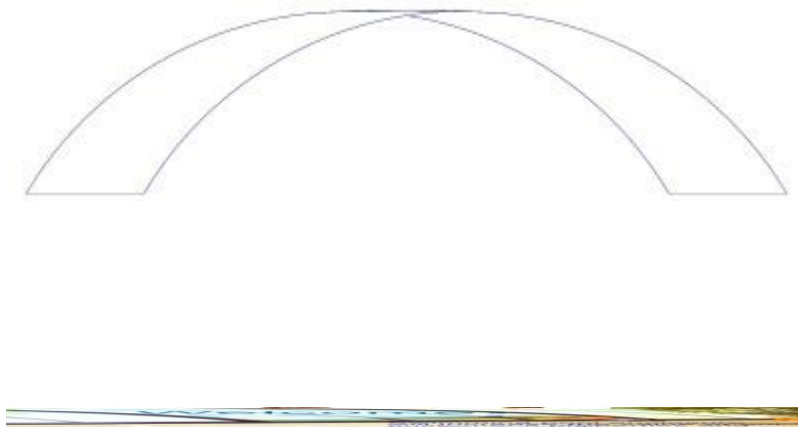

Important Information



Advantages and benefits of Swimming Pool Enclosures

There are numerous arguments to decide for a Swimming pool Enclosure .Let's point out just the most important one:

Security

More and more countries take owners of a swimming Pool in duty by law, to protect their properties and all what will be part of it. Also owners of swimming pools are obliged, to secure their pools against accidents with persons, especially smaller children and even animals..

There is no better way for sure to fulfil those legal obligations than a Swimming pool Enclosure - as long as it enclose the whole pool – either on a level with the pool or on a perimeter wall. In addition any door into the pool should be lockable. The whole construction must be safe to prevent persons or animals to get injured – in time of operation and in time without operation as well.

Quality, excellent Engineering, chosen materials, workmanship and Service. These are the main issues and key aspects of our so called CAMPANA Philosophy, our customers appreciate so much.

ALFA ERGON EOOD

Comfort

There are special needs and requirements for those regions with hot outside temperatures and lots of sun hours. Tourists and even locals prefer of these regions prefer a pleasant temperature of the pool water. They want to enjoy swimming but not get a sun burn.

Swimming pool Enclosure Systems offers a wide range of adjustments for all weather conditions. Only a few manual adjustments with or without a remote control are needed to convert an „indoor“ swimming pool to an „outdoor“ swimming pool with no cover or only partial covering.

Too much sun UV radiation ? Very hot outside temperatures ? Too windy / stormy or heavy rain ? Swimming pool enclosure will give our customers unrestricted fun in all weather conditions.

Hotel Pools / Public or private pools / Terraces can increase their offer of amenities.

Another undisputed advantage of Swimming pool enclosures keeps your swimming pool clean by offering protection against pollution, dirt, sand, leaves and unwelcome intruders, like small animals, insects and so far. You will save time for cleaning up your pool.

Materials, Technique & Design

To fulfil all customer needs - special regarding functions, safety and long lifetime - we do use aluminium domed structures only, whose arches span the Swimming pool / Terrace. The individual ends are integrated in rollers, guided over base rails, screwed along both sides.

Special webbed polycarbonate panels and polycarbonate clear glass panels are particularly proofed as enclosure materials. A special feature will be our special Clear glass, which is additional finished with a patented surface coating. The advantages: withstanding almost any form of force, not splintering and no scratches – for a clear view not only in the first month but for many years.

There are much more reasons, to decide for Enclosures. Pls. refer to our checklist and get also more information regarding arguments.

ALFA ERGON EOOD

***„It will become too expensive
to buy cheap“***

Unknown American business man

All products are an excellent Investment.

The value of the property will increase.

Your benefits & pleasure will increase as well ...

... and your neighbours will envy you for sure.

Special Solutions



Raised Entrance area for System MOBIL

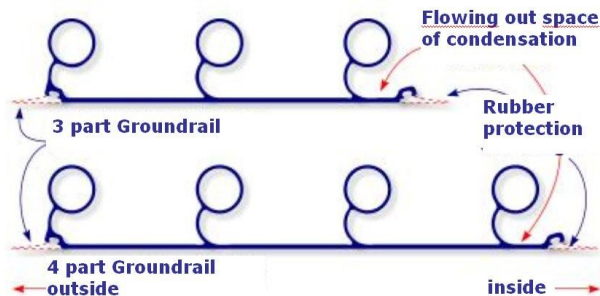
For our customers which prefer however a lower enclosure but wants to have also enough space within the pool enclosures, i.e. to relax or drying after or before going to swim, has developed a special raised Entrance for the models MINI and MOBIL.



Raised entrance area for MOBIL

ALFA ERGON EOOD

GroundRail



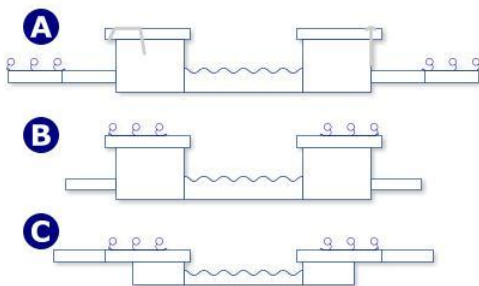
Depending of the chosen length of the Enclosure, we deliver its special developed and patented Ground rail in two versions (three and four part version).

Both sides have grooves integrated for receiving EPDM lip seals, because most of the pools are installed on uneven surfaces, giving rise to gaps and cavities beneath the ground rails. It will take not long and dirt, leaves or small insects are found in this area. Finally it could influence the interior. From inside it's also not a nice view to the swimmer.

Therefore is offered - optional - a permanent and reliable solution to this problem: The so called BAP is a fine uneven floor compensator of high-quality EPDM (registered design). BAP features EPDM lips seals of various heights that are drawn to special grooves worked along the outer and the inner sides of the ground rails.

*Note: BAP is not part of our standard delivery. It has to order in addition.

Flexible Installations

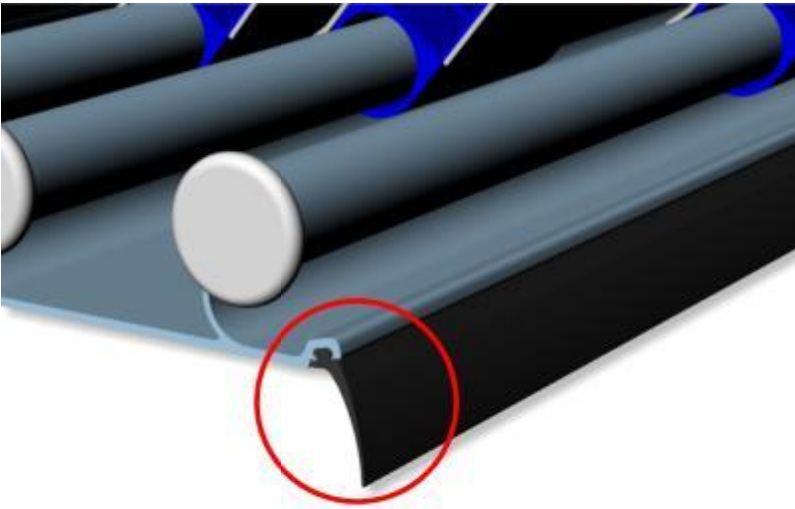


Depending to the local circumstances, there are 3 opportunities to install the ground rails to the pool:

- **A.** behind a wall or on a raised rand of the pool.
- **B.** On one wall or on two parallel walls.
- **C.** on two parallel rends of the pool

ALFA ERGON EOOD

Ground EPDM Seals



Because most of the pools are installed on uneven surfaces, giving rise to gaps and cavities beneath the ground rails. It will take not long and dirt, leaves or even small insects are found in this area. Finally it could influence the interior. From inside the pool it's also not a nice view to the swimmer.

Therefore it is offered - optional - a permanent and reliable solution to this problem: The so called BAP* is a fine uneven floor compensator of high-quality EPDM (registered design). BAP features EPDM lips seals of various heights that are drawn to special grooves worked along the outer and the inner sides of the ground rails.

Just move your mouse to the red circle within the picture and you will get an idea about how flexible the EPDM will suit to different surfaces of the ground.

*Note: **BAP** is not part of our standard delivery. It has to order in addition.

ALFA ERGON EOOD

SHOW ROOM : Nikola Gabrovski 102A, (Studentski Grad),1700 SOFIA
TEL .02 44 37 220, 02 42 63 200 FAX 02 42 63 220
Email: info@alfaergon.com www.alfaergon.com

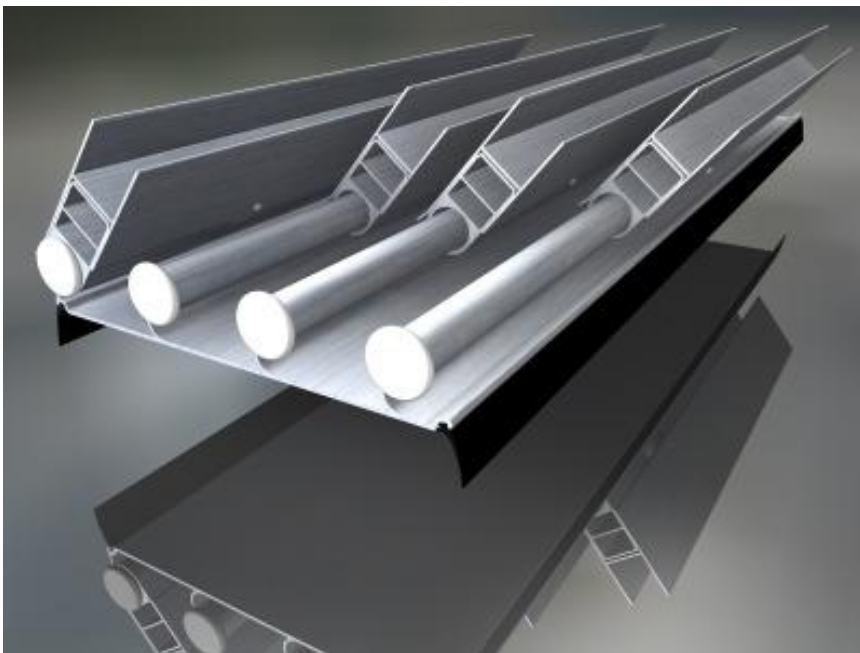
WindProtection



Extreme weather conditions with gale-force winds increases around the world. This is something any pool owner should always think about, before he made his decision to an Enclosure in general. Again stepped already ahead into this problem to protect our customers and their properties.

Based on long term experience we have developed a well designed protection against strong wind or heavy storm.

The special designed wind protection surrounds the tubes more then 270 degrees. No chance for a tube to get out of it



ALFA ERGON EOOD

SHOW ROOM : Nikola Gabrovski 102A, (Studentski Grad),1700 SOFIA
TEL .02 44 37 220, 02 42 63 200 FAX 02 42 63 220
Email: info@alfaergon.com www.alfaergon.com

END-WALL Protection



CAMPANA End Wall System

A well constructed and designed end-wall is nice to have. But it is also very important to keep an eye to the stability and protection criteria.

The Aluminium end-walls and frames of Swimming pool enclosures guarantee a proofed and certified very stable construction.

Customers, which want to increase their standard may also choose PC clear glass panels instead of the standard webbed PC panels for the end-walls. Both are also proofed and testified.

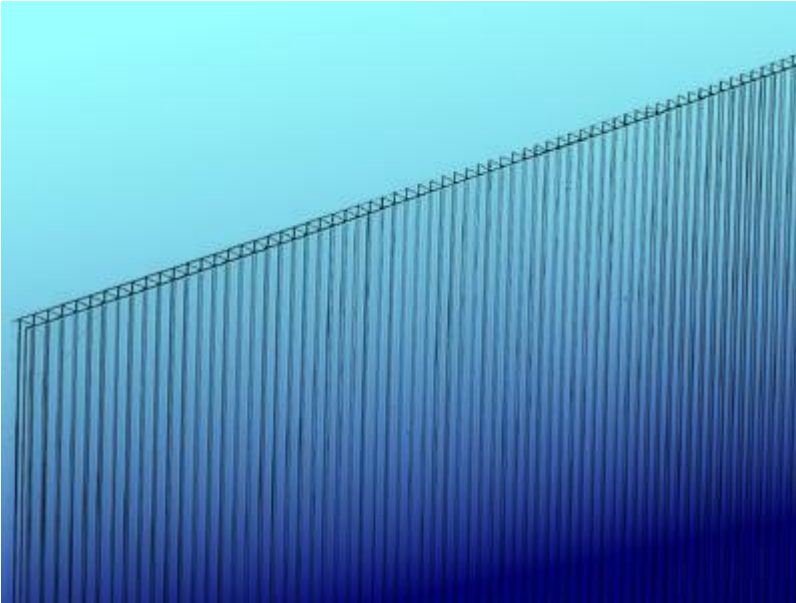
All elements of a swimming pool enclosure are suiting each other. In regard to the design but - more than that : in regard to the safety.

That's the reason, because why we never will provide end-walls for swimming pool enclosures which are just made from foil or film materials. Such materials can in no way protect in case of wind neither prevent kids or other unauthorized person to go into the pool area.

To open the end-walls, just hang them out. No special devise is needed. All you have to do, is to take out the stainless sticks with your hand. That's all. Right after you can stow any end-wall to a suitable stowing area or just beside.

ALFA ERGON EOOD

WebbedPC glass panels



Webbed PC (Polycarbonate) Glass panels

All webbed PC glass panels are made from Polycarbonate (*Macrolon made from BAYER-Germany*), in short: PC.

PC is one of the toughest transparent thermoplastics around, withstanding almost any kind of force, from a rock fall to a percussion hammer, without splintering. These tried and tested energy-absorbing characteristics still remain the same doesn't matter in cold or hot areas.

Before we decide for PC material, we tested several other materials, which are quite much cheaper. All other materials failed in our tests dramatically.

WE assure their customers, to get always the best materials and the most possible safety for their enclosures.

Only our webbed Polycarbonate PC glass panels are safe to splint and fulfil the high standards of requirements to big surfaces, like swimming pools or Terraces enclosures, even for commercial needs.

Because of the special production and workmanship our panels remain stable in function and colour in connection with UV light.

ALFA ERGON EOOD

SHOW ROOM : Nikola Gabrovski 102A, (Studentski Grad),1700 SOFIA
TEL .02 44 37 220, 02 42 63 200 FAX 02 42 63 220
Email: info@alfaergon.com www.alfaergon.com

PC Clear glass



PC Clear Glass - a clear view with no compromises

With PC clear glass instead of webbed PC glass you will give your pool a better view and also a High-Quality shiny optic. Clear Glass is special designed for Swimming pools and Terraces. Clear glass is made from 4 mm thick polycarbonate clear glass panes, which are in addition finished with a patented surface coating for abrasion-, scratches- and UV resistance.

The difference is hard to describe with words. Your local Dealer is prepared to hand over a personal test kit to you. The test kit includes one pcs. regular PC Clear Glass and one pcs. PC Clear Class, together with a small steel wool.

Right after you finished your test you will feel and see the big difference for sure!

Aluminium & RAL Colors

The standard colour of [anodized Aluminium](#) frames is Aluminium-silver.

On request we are able to deliver the Aluminium frames in any other colours, which are based to the International RAL Standard.

For your information, pls. refer to the table below, showing you the most popular RAL colours of our customers.

Please understand, that the shown colours below may become different in nature, because colours are i.e. depending to the adjustment of your Monitor or in case of printing to the paper or UV influence. Therefore the shown colours may helpful to get an orientation about the colour, only.

RAL 1015Light ivory , **RAL 5002**Ultramarine blue ,**RAL 5017**Patrol blue

RAL 6004Blue green , **RAL 6005**Moos green ,**RAL 6009**Fir green **RAL 8016**Mahogany brown

ALFA ERGON EOOD

Load Stability



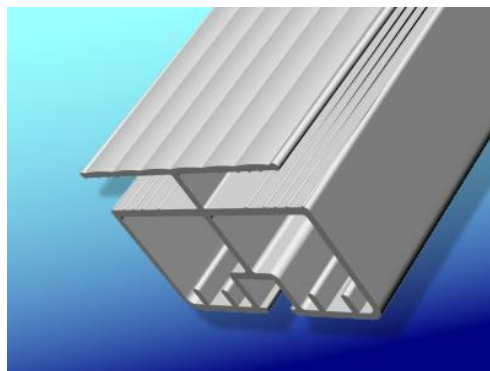
Test construction for the yearly check of German Technical Inspections Board (TUEV)

Safety first

Our products, construction and new developments will present to the German TUEV regularly. The German TUEV is world wide known for their High Standard regulation.

Many of the technical advantages of our products, normally will not recognize from the pool owner or user.

For instance: our arch sections. The special construction of the arch profile sections (see below) allow an enormous load capacity and as a result a very high stability as well.



The arch profile (Patent registered)

ALFA ERGON EOOD

SHOW ROOM : Nikola Gabrovski 102A, (Studentski Grad),1700 SOFIA
TEL .02 44 37 220, 02 42 63 200 FAX 02 42 63 220
Email: info@alfaergon.com www.alfaergon.com

DoorSystems



Integrated Door Version

Integrated Door System ask for a minimum space of 90 cm on each side (Measurement counts from the outer side of the Ground rail to the beginning of the pool)



Space Safe Version

Comparing to the first picture / sample, the advantage of the CAMPANA Space Safe Version are the doors, because they are adjust to the Ground rails as long as they was opened. There will be no hindrance In case of pool stairways or raised swimming pool rands.

This solution is part of the CAMPANA Solid End-Wall Systems for the Models GRANDE and ATLANTIS and will help, to feel the touch of luxury for the owner and his guests.

A final tip to all which are just going to create their GRANDE or ATLANTIS swimming pool. The Panorama End Wall System need a little bit more space regarding the width. On the other hand it offers a wide range of ideas and options.

ALFA ERGON EOOD

SHOW ROOM : Nikola Gabrovski 102A, (Studentski Grad),1700 SOFIA
TEL .02 44 37 220, 02 42 63 200 FAX 02 42 63 220
Email: info@alfaergon.com www.alfaergon.com

TÜV Certifications

ZERTIFIKAT CERTIFICADO CERTIFICAT CERTIFICATE CERTIFICATE

Zertifikat

Nr.: B 01 09 13530 001



Campana Schwimmbadüberdachungen Mittelweg 5-7 27383 Schreefel

mit dem Fertigungsdatum 13530

ist berechtigt, nachfolgend genanntes Produkt mit dem TÜV Mark E29 zu kennzeichnen. Unzulässige Hinweise sind zu beachten.

Produkt: Schwimmbadüberdachungen

Modell: Campana Mobil

Kennzeichen: Beispiel: Bogenkonstruktion aus Aluminium-Profile mit Polymerbeton-Hohlkammerplatten auf beweglichen Abdeckungen von Schwimmbecken. Aluminium-Profile nach DIN 1055, F-12, DIN 1055/1, Aluminium-Hohlkammerplatte nach DIN 1931.
Polymerbeton-Hohlkammerplatte: MABLOC 14/18 Stärke 8 mm.
Anwendung: ca. Höhe 3,1-3,8 m, Breite 3,0-8,0 m.

Das oben genannte Produkt wurde auf freiwilliger Basis auf die Einhaltung der folgenden grundlegenden Anforderungen geprüft:
DIN 1055 T 1:1990
DIN 4113 T 1:1990



Bericht Nr.: 70018110 E - III 11 12 13530 501

Freigegeben mit der obigen Zertifikatsnummer durch die Zertifizierungsstelle von TÜV PRODUCT SERVICE GMBH.

Ausstellung: HAMBURG / D
Datum: 04.09.2001

TÜV PRODUCT SERVICE GMBH Zertifizierungsstelle · Riderstrasse 65 · D-80339 München

Technischer Bericht Nr. 70018110 vom 2001-08-31

Auftraggeber: Campana Schwimmbad-Überdachungen Mittelweg 5-7 D-27383 Schreefel

Hersteller: Auftraggeber

Gegenstand der Begutachtung: Schwimmbad-Überdachungen Campana-Mobil, Mini-Mobil, Grande-Mobil und Atlantis

Prüfspezifikation: DIN 1055 Teil 4: 1996; Lastannahmen für Bauten, Verkehrslasten, Windlasten bei nicht schwingungsanfälligen Bauwerken; DIN 4113 Teil 1: 1980; Aluminiumkonstruktionen unter vorwiegend ruhender Belastung; Berechnung und bauliche Durchbildung

Aufgabe der Begutachtung: Prüfungen nach dem Gerätesicherheitsgesetz in der Fassung des Zweiten Gesetzes zur Änderung des Gerätesicherheitsgesetzes vom 26. August 1992 (BGBl. I S. 1564)

Risikoprüfung: Die vorgestellten Schwimmbad-Überdachungen Campana-Mobil, Mini-Mobil, Grande-Mobil und Atlantis erfüllen die Anforderungen aus den Prüfspezifikationen. Gegen eine Einteilung des TÜV-Zeichens bestehen keine Bedenken.

Dieser Technische Bericht darf nur zu vollständigen Kopien weitergegeben werden. Die Verwendung zu Werbezwecken bedarf der schriftlichen Genehmigung. Er enthält das Ergebnis einer eingehenden Untersuchung zu dem vor Prüfungsbeginn eingereichten und zeitlich unbefristet gültigen Prüfungsgegenstand aus der nächsten Fertigungslinie.

TÜV Product Service GmbH
Ringer Weg
37074 Hannover
27511 Hanting
Telefon: +49 42 541 16-11 Fax: +49 42 541 16-10 E-Mail: thomas.druckler@tuev-luebeck.de
Technischer Bericht Nr. 70018110
Prüfer: Thomas Druckler
2001-08-31
Seite 1 von 2

1 Produktbeschreibung

1.1 Funktion

Bewegliche Bogenkonstruktionen aus Aluminium-Profilen und Polycarbonat-Hohlkammerplatten zur beweglichen Abdeckung von Schwimmbecken. Die Schiebelemente schützen das Schwimmbad vor Laub, Regen und Schnee und werden bei offener Benutzung manuell ineinandergeschoben.

1.2 Technische Daten

Aluminium-Profil:	LM-Profilie aus AlMgSi0,5, F-22, DIN 1725/1748 eloxiert E6/C0020 mN, DIN 17611	
Polycarbonat-Hohlkammerplatten:	MAKROLUX 163 KB Stärke 8 mm	
Abmessungen:	ca. Höhe	Breite
Campana-Mobil	0,9-1,8 m	3,0-8,0 m
Mini-Mobil	0,6-1,0 m	3,0-6,0 m
Grande-Mobil	2,0-2,3 m	4,0-6,0 m
Atlantis	2,3-2,7 m	6,0-8,0 m

Die Schiebelemente werden auf jew. 4 Rollen auf den Bodenschienen verschoben. In Ruhestellung werden die einzelnen Schiebelemente seitlich mit Steckbolzen gesichert. Durch den Einsatz verschließbarer bzw. verriegelbarer Steckbolzen und verschließbarer Türen kann der Zugang zum Schwimmbad gesichert werden.

Die veränderten Windsicherungsleistungen (0,2 m lang) sind jeweils paarweise auf beiden Seiten der Schiebelemente angeordnet und greifen unter die Rollen der Bodenschienen.

Die Schwimmbadüberdachungen können mit oder ohne Türen in den Stirnwänden montiert werden. Es können Flügeltüren (Weiterlässe), Standard- oder Panorama-Schiebetüren zur Verwendung kommen.

Für die Schwimmbadüberdachungen Campana-Mobil und Mini-Mobil steht die Ausstattung mit der „Concept 365 Optimierungskomponente“ zur Verfügung. Hierbei handelt es sich um eine integrierte Abdeckung mit manueller Aufrollvorrichtung zu Energieeinsparungszwecken. Die Rollmechanik ist dabei auf einem Stirnseitenelement montiert und wird mit dem Element zusammen verschoben. Alle Schwimmbadüberdachungen werden von Campana Fachpersonal montiert und betriebsfertig an die Kunden übergeben.

TÜV Product Service GmbH
Ringer Weg
37074 Hannover
27511 Hanting
Telefon: +49 42 541 16-11 Fax: +49 42 541 16-10 E-Mail: thomas.druckler@tuev-luebeck.de

Technischer Bericht Nr. 70018110
Prüfer: Thomas Druckler
2001-08-31
Seite 2 von 2

TÜV Product Service GmbH

Thomas Druckler
Projektleiter Thomas Druckler
Mechanische Scharnier

TÜV Product Service GmbH
Ringer Weg
37074 Hannover
27511 Hanting
Telefon: +49 42 541 16-11 Fax: +49 42 541 16-10 E-Mail: thomas.druckler@tuev-luebeck.de

Technischer Bericht Nr. 70018110
Prüfer: Thomas Druckler
2001-08-31
Seite 1 von 2

	Grande 6000	Atlantis 8000
max. Staudruck	0,60 kN/m ²	0,57 kN/m ²
max. Windsicherungsbeitrag	31,0 m/s	30,2 m/s
Windlastkategorie	III, 11	III, 11

ALFA ERGON EOOD

SHOW ROOM : Nikola Gabrovski 102A, (Studentski Grad), 1700 SOFIA

TEL .02 44 37 220, 02 42 63 200 FAX 02 42 63 220

Email: info@alfaergon.com

www.alfaergon.com



Safety First

Keeping kids and pets safe, one pool at a time.

Learn More ►



ALFA ERGON EOOD

SHOW ROOM : Nikola Gabrovski 102A, (Studentski Grad),1700 SOFIA

TEL .02 44 37 220, 02 42 63 200 FAX 02 42 63 220

Email: info@alfaergon.com

www.alfaergon.com



Cover Benefits

Pool Safety

“ We have great peace of mind knowing that our kids are safe. ”

Nate & Elizabeth Hoffman
Highland, Utah



ALFA ERGON EOOD

SHOW ROOM : Nikola Gabrovski 102A, (Studentski Grad),1700 SOFIA
 TEL .02 44 37 220, 02 42 63 200 FAX 02 42 63 220
 Email: info@alfaergon.com www.alfaergon.com

ALFA ERGON EOOD

SHOW ROOM : Nikola Gabrovski 102A, (Studentski Grad),1700 SOFIA
TEL .02 44 37 220, 02 42 63 200 FAX 02 42 63 220
Email: info@alfaergon.com www.alfaergon.com